

Art Düsseldorf
2025

10 – 13
April

Booth G15

KORNFELD
GALERIE · BERLIN

Booth G15

Lena Keller

Tamara Kvesitadze

Johanna Reich

Shanee Roe

Thursday

10 April, 12 – 4pm (VIP)
4 – 8pm (Preview)

Friday

11 April, 11am – 7pm

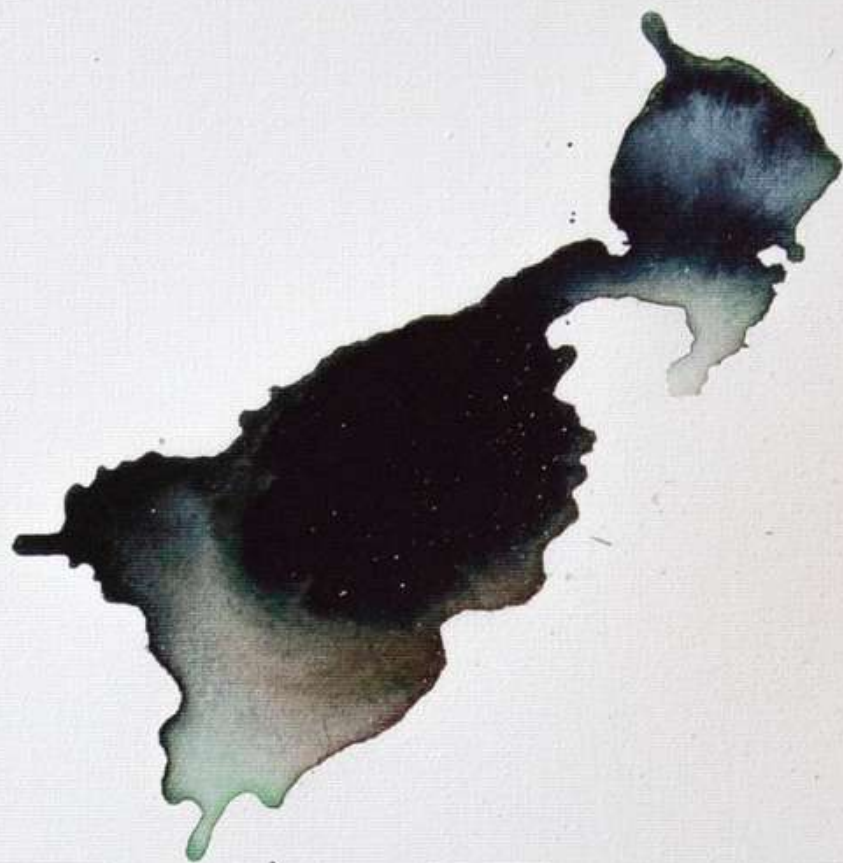
Saturday

12 April, 11am – 7pm

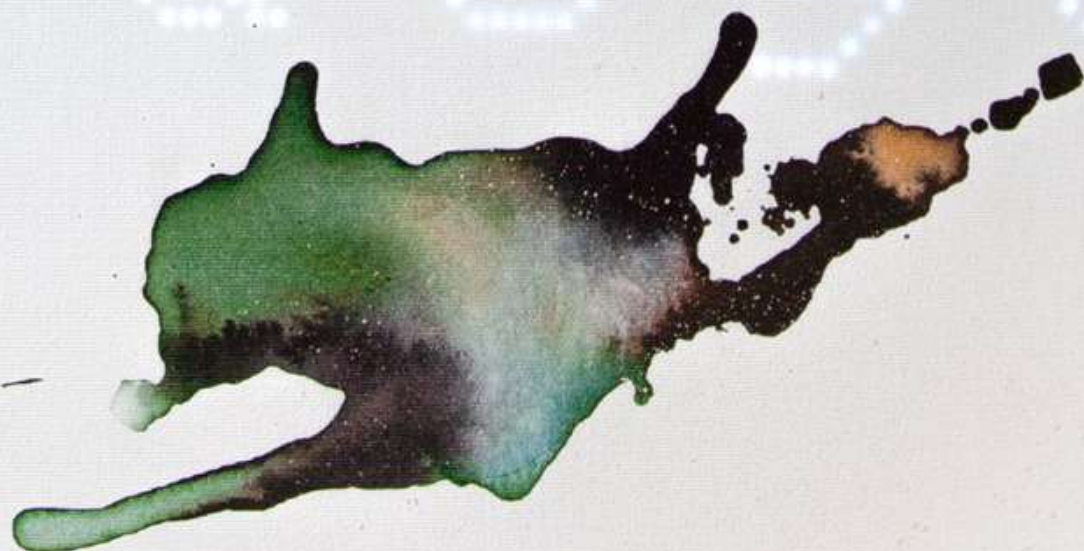
Sunday

13 April, 11am – 6pm

10 – 13
April



1 u é y a



Our Presentation

At Art Düsseldorf 2025, our presentation brings together four artists—Shanee Roe, Tamara Kvesitadze, Lena Keller, and Johanna Reich—under the themes *Love is the Answer* and *Liminal State*.

Love is the Answer

In the context of *Love is the Answer*, Shanee Roe and Tamara Kvesitadze present two powerful and contrasting visions of intimacy, vulnerability, and the cycles of connection.

Shanee Roe's paintings reveal intimate, raw scenes of men in states of profound vulnerability—a depiction rarely seen and often deemed taboo. Her figures are stripped bare, devoid of the protective layers of hair or clothing, rendering them exposed in a way that society has traditionally resisted. Here, Roe reclaims the power dynamic, offering the female gaze not as a mirror of desire but as an exploration of empathy and control. In these moments of closeness, Roe's portrayal suggests a radical idea: that love, more than dominance or assertive masculinity, is what allows individuals to truly reveal themselves, to dissolve walls and power plays. Roe's work challenges and redefines relationships, suggesting that such openness and softness can break down societal restrictions, positioning love as a transformative force in how we perceive male vulnerability.

Tamara Kvesitadze, on the other hand, expands this exploration of power and intimacy, shifting the focus to the female experience. Her work addresses themes such as power structures, self-determination, and the role of the viewer in the artistic narrative. Her sculptures and installations explore the tension between the human body and its environment. The female body has always been a central theme in Kvesitadze's work, but rarely in a peaceful depiction of quiet women – beneath the surface, there is almost always a form of ambivalence and nonconformity. Her figures show broken, fragmented bodies, presenting a paradoxical connection of beauty and shock. The beauty of her works arises from the strength found in their fragility, where the trauma of the figures is reconfigured as a new dance. Movement remains the central element in her art, from kinetic sculptures to watercolors.

Both Roe and Kvesitadze explore the complexities of control and exposure within intimate spaces, making the viewer complicit in the act of looking. While Roe's work challenges traditional notions of masculinity by depicting male vulnerability, Kvesitadze's sculpture highlights how female bodies have historically been sites of control and struggle. By doing so, both artists question the structures that dictate who may express love, vulnerability, and autonomy, ultimately suggesting that love is not just about closeness but about the power to define one's own role within it.

Liminal State

Liminality—existing in the in-between—defines the works of Lena Keller and Johanna Reich. Both artists explore the shifting boundaries of perception, reality, and identity in a world increasingly shaped by digital intervention.

Lena Keller's landscapes can be seen as existing in a liminal state, as they mirror our modern methods of capturing, altering, and often distorting natural landscapes. Today, our encounters with the outdoors are frequently filtered through digital screens—captured, retouched, and reshaped to meet the aesthetic demands of the digital world. In this sense, Keller's layered compositions are not just representations of nature but commentaries on the way we manipulate and reframe reality to fit a digital ideal. Her landscapes reveal a truth that is far from pure: a carefully constructed hybrid of reality and artifice, reflecting our need to see "nature" through a curated, hyper-real lens.

Johanna Reich's work expands on this dialogue by questioning how our identities, like these landscapes, are digitally crafted and adapted. Her art examines our complex relationship with technology, revealing the fragility of selfhood within a media-saturated world. Through her explorations in video, AI, and blockchain art, Reich addresses how digital existence can both ground and obscure us, reflecting the constant flux of identity in a hyper-connected environment. The liminal state here becomes a phenomenon we all engage with, as we curate and modify our realities—much as we edit a photo—thus creating a feedback loop between our digital and physical worlds.

Ultimately, *Liminal State* speaks to the relentless cycle of reshaping reality. Through Keller's and Reich's perspectives, this state is not only the realm of digital edits on a screen but a larger societal force, continuously reshaping our conceptions of what is real. Technology has granted us the ability to lift fragments of reality, alter their context in the digital sphere, and reintroduce them to the world as new, reshaped truths. This perpetual reconfiguration—this constant rewriting of reality—is the essence of the liminal state.

SHANEE ROE

*1996 in New York City, USA
Lives and works in Berlin, Germany

KORNFELD Galerie Berlin



Shanee Roe

Playing with a little head, 2025

Acryl, Öl und Collage auf Leinwand

Acrylic, Oil and collage on canvas

120 x 140 cm | 47 1/4 x 55 1/8 in

Work ID: ShR/M 27



KORNFELD Galerie Berlin



Shanee Roe

Stuck Inside, 2025

Acryl und Öl auf Leinwand

Acrylic and Oil on canvas

130 x 95 cm | 51 1/8 x 37 3/8 in

Work ID: ShR/M 30

KORNFELD Galerie Berlin



Shanee Roe

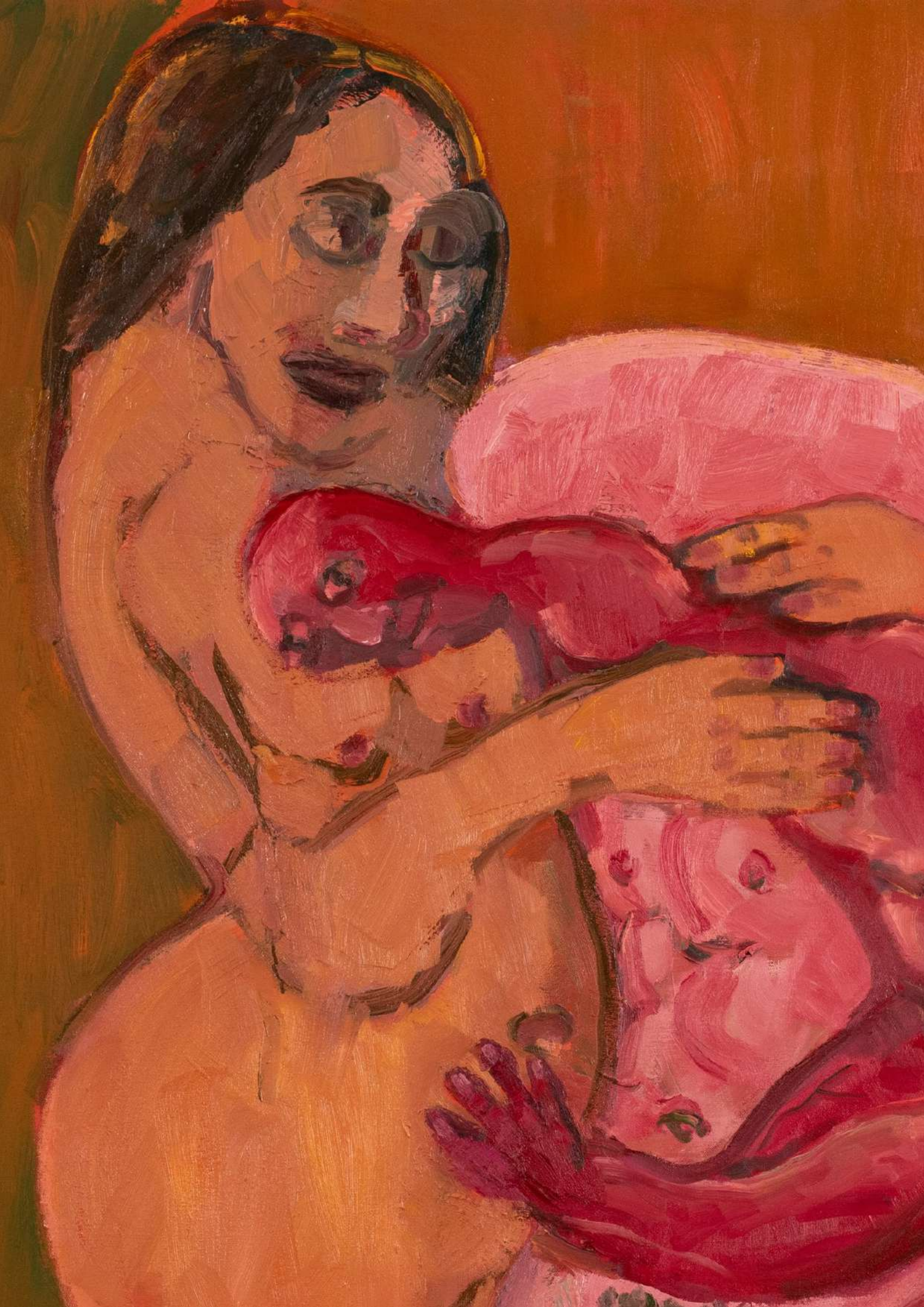
resting muscle, 2025

Acryl und Öl auf Leinwand

Acrylic and Oil on canvas

180 x 150 cm | 70 7/8 x 59 in

Work ID: ShR/M 33



KORNFELD Galerie Berlin



Shanee Roe

Untitled, 2024

Bleistift auf Papier

pencil on paper

29,7 x 21 cm | 11 3/4 x 8 1/4 in

Work ID: ShR/P 3

KORNFELD Galerie Berlin



Shantee Roe

Untitled, 2023

Bleistift auf Papier

pencil on paper

25 x 25 cm | 9 7/8 x 9 7/8 in

Work ID: ShR/P 9



KORNFELD Galerie Berlin



Shanee Roe

Untitled, 2023

Bleistift auf Papier

pencil on paper

29,7 x 21 cm | 11 3/4 x 8 1/4 in

Work ID: ShR/P 13

TAMARA KVESITADZE

*1968 in Tbilisi, Georgia
Lives and works in Tbilisi, Georgia

KORNFELD Galerie Berlin



Tamara Kvesitadze

Legs, 2009

Holz, Metall, Acryl, Öl

wood, metal, Acrylic, Oil

170 x 50 x 30 cm | 66 7/8 x 19 5/8 x 11 3/4 in

Work ID: TK/S 43



KORNFELD Galerie Berlin



Tamara Kvesitadze

Fight, 2022

Aquarell auf Papier

water colour on paper

70 x 100 cm | 27 1/2 x 39 3/8 in

Work ID: TK/P 50

KORNFELD Galerie Berlin



Tamara Kvesitadze

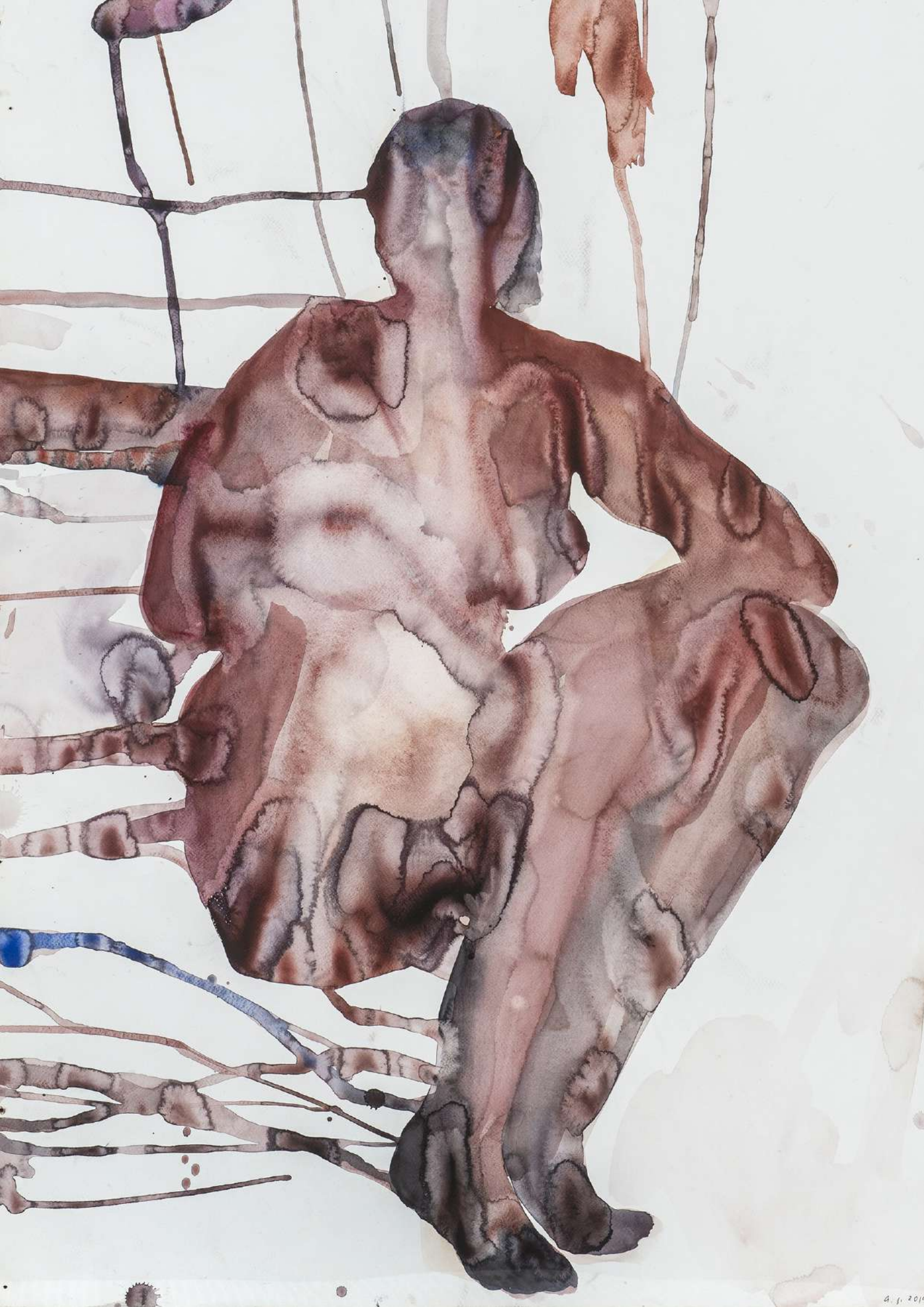
Untitled, 2013

Aquarell auf Papier

water colour on paper

80 x 45 cm | 31 1/2 x 17 3/4 in

Work ID: TK/P 11



LENA KELLER

*1980 in Heidelberg, Germany
Lives and works in Munich, Germany

KORNFELD Galerie Berlin



Lena Keller

Nocturnal, 2025

Öl auf Leinwand

Oil on canvas

50 x 40 cm | 19 5/8 x 15 3/4 in

Work ID: LK/M 31



KORNFELD Galerie Berlin



Lena Keller

Lightening, 2025

Öl auf Leinwand

Oil on canvas

50 x 40 cm | 19 5/8 x 15 3/4 in

Work ID: LK/M 32

KORNFELD Galerie Berlin



Lena Keller

Overcast, 2025

Öl auf Leinwand

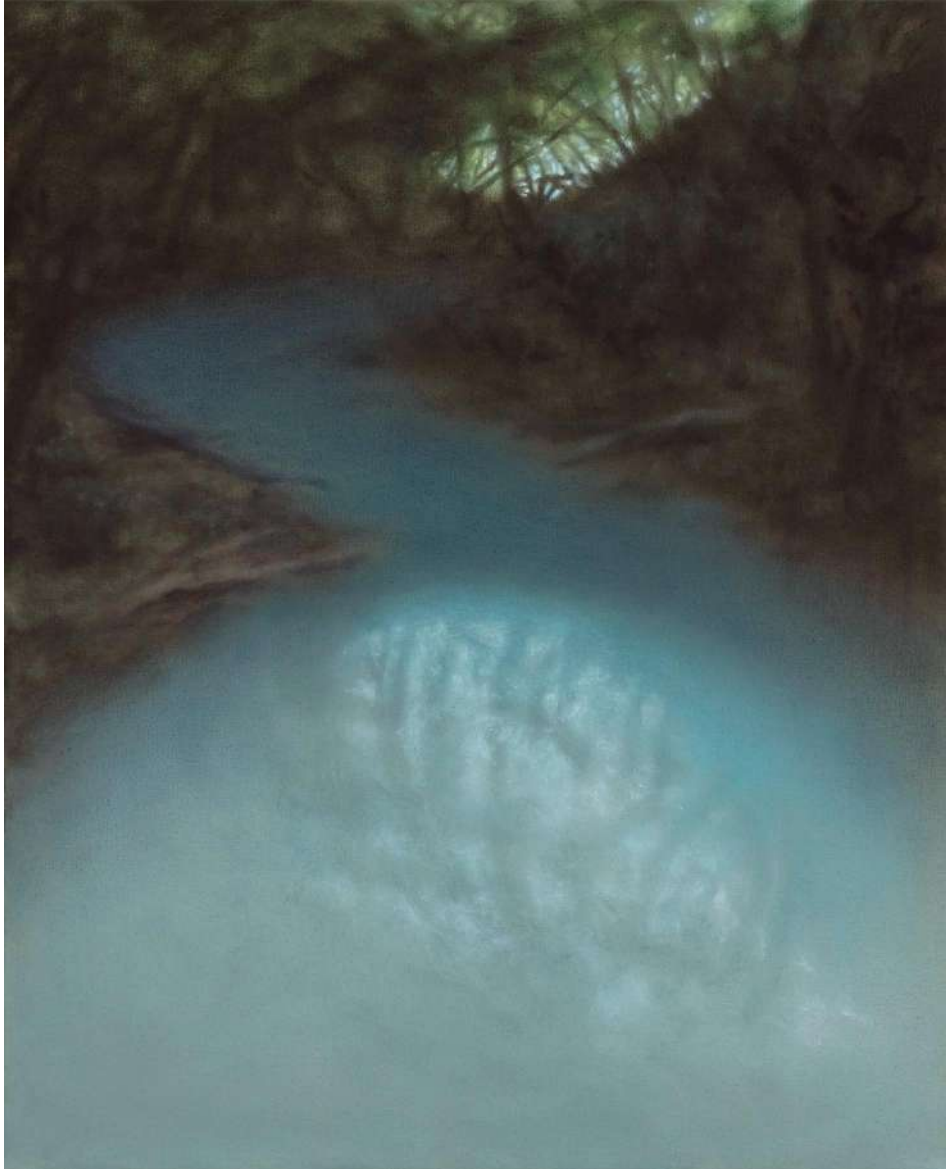
Oil on canvas

50 x 40 cm | 19 5/8 x 15 3/4 in

Work ID: LK/M 33



KORNFELD Galerie Berlin



Lena Keller

Gleam, 2025

Öl auf Leinwand

Oil on canvas

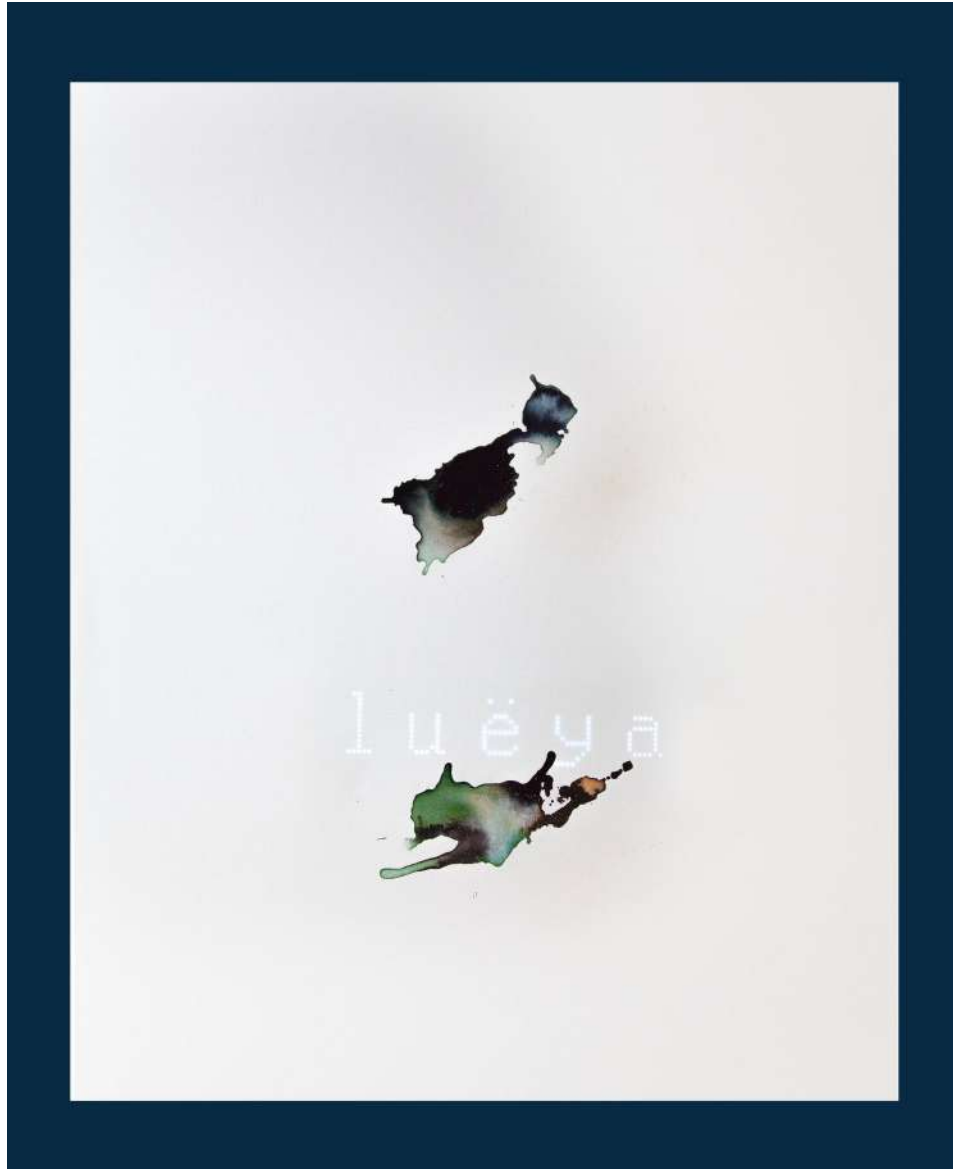
50 x 40 cm | 19 5/8 x 15 3/4 in

Work ID: LK/M 34

JOHANNA REICH

*1977 in Minden, Germany
Lives and works in Cologne, Germany

KORNFELD Galerie Berlin



Johanna Reich

Aevorìs / Aeven, 2024

Acryl und Tinte auf Leinwand, mit LED, K.I.-generiert

Acrylic and ink on canvas, with LED, A.I. generated

100 x 80 cm | 39 3/8 x 31 1/2 in

Unikat | Unique

Work ID: JR/M 13



KORNFELD Galerie Berlin



Johanna Reich

Zwischenwelt / Tiefsee, 2025

Tusche auf Leinwand mit Video Projektion

Indian ink on canvas with video projection

150 x 120 cm | 59 x 47 1/4 in

Unikat | Unique

€ 15.800,00 (inkl. 7 % MwSt. | incl. 7 % VAT)

Work ID: JR/M 32

KORNFELD Galerie Berlin



Johanna Reich

Denken, 2024

Tusche auf Papier

Indian ink on paper

30 x 40 cm | 11 3/4 x 15 3/4 in

Work ID: JR/P 5



KORNFELD Galerie Berlin



Johanna Reich

Welt, 2024

Tusche auf Papier

Indian ink on paper

30 x 40 cm | 11 3/4 x 15 3/4 in

Work ID: JR/P 9

KORNFELD Galerie Berlin



Johanna Reich

Hynitha / Vêlgarë, 2025

Tusche auf Papier mit LED

Indian ink on paper with LED

40 x 30 cm | 15 3/4 x 11 3/4 in

Work ID: JR/P 11

KORNFELD Galerie Berlin



Johanna Reich

Hynitha / Lyra, 2025

Tusche auf Papier mit LED

Indian ink on paper with LED

40 x 30 cm | 15 3/4 x 11 3/4 in

Work ID: JR/P 10



KORNFELD Galerie Berlin



Johanna Reich

Hynitha / Thyrin tha, 2025

Tusche auf Papier mit LED

Indian ink on paper with LED

40 x 30 cm | 15 3/4 x 11 3/4 in

Work ID: JR/P 12

Bitte richten Sie Anfragen an eine der folgenden Personen /
Please direct inquiries to one of the following contacts:

Tilman Treusch, treusch@kornfeldgalerie.com

Sabina Passauer, passauer@kornfeldgalerie.com

Nemo Holtmann, holtmann@kornfeldgalerie.com

Maximilian Egger, egger@kornfeldgalerie.com

KORNFELD Galerie Berlin

Fasanenstraße 26, 10719 Berlin
www.kornfeldgalerie.com
galerie@kornfeldgalerie.com