



Untitled
Miami Beach
Art

5 - 10 December 2023

Booth C20

KORNFELD
GALERIE · BERLIN

KORNFELD
GALERIE · BERLIN

Untitled
Miami Beach
Art

Agnes Lammert

VIP and Press Preview:
Tuesday, 5 Dec, 12pm–7pm

David Meskhi

Opening Hours:

Dieter Jung

Wed, 6 Dec, 11am–7pm

Johanna Reich

Thurs, 7 Dec, 11am–7pm

Fri, 8 Dec, 11am–7pm

Lena Keller

Sat, 9 Dec, 11am–7pm

Sun, 10 Dec, 11am–5pm

Nick Dawes

Adress:

Youjin Yi

Ocean Drive and 12th Street,
Miami Beach, Florida

Project funded by



For **Untitled Art**, Miami Beach 2023, **KORNFELD Galerie Berlin** is pleased to present the works of artists

Agnes Lammert (*1984 in Dresden, Germany),

David Meskhi (*1979 in Tbilisi, Georgia),

Dieter Jung (*1941 in Bad Wildungen, Germany),

Johanna Reich (*1977 in Minden, Germany),

Lena Keller (*1980 in Heidelberg, Germany),

Nick Dawes (*1969 in Johannesburg, South Africa),

and **Youjin Yi** (*1980 in Gangneung, South Korea).

Our presentation of works by seven artists combine different media, moving between the analog and digital world, and shifting between a sense of calmness and mystery.

Lena Keller invites the viewer to look at nature and landscapes through the relationship between man and nature through a digital lens. In a similar vein Johanna Reich explores the boundaries of real, virtual, and painterly imagery through raising awareness about our relationship to the natural world. Both artists focus their work around interconnection between the analog and the digital world, how they intertwine and how they interfere with one another.

Working both analog and digitally, Dieter Jung counts as a pioneer in artistic holography, playing with light and creating almost meditational pieces.

These artists bring a sense of calmness to the viewer, coming together beautifully with the large scale painterly abstractions by Nick Dawes.

In addition David Meskhi's almost abstract like photographs reminisce the concept of colorfield observed in the above mentioned artists.

The mysterious and semi abstract sculptures by Agnes Lammert bring in an element of three dimensionality, that go well with Youjin Yi's curious landscapes showing the presence of mysterious figures and hybrids.



AGNES LAMMERT

Agnes Lammert presents her sculptures in which something seems to be packed or wrapped, but whose content we can never determine with certainty. They seem as if they could be wet and heavy. The outlines of the forms wrapped in cloth are reminiscent of human bodies, thus suggesting the absence of man. Or are they even ghosts, moulded from plaster?

Inspired by dance such as Japanese Butoh, states of movement such as holding, falling, rising, improvising are evident in her work.

KORNFELD

Fasanenstraße 26 | 10719 Berlin
+49 30 889225890 | galerie@galeriekornfeld.com



Agnes Lammert

Equilibrium, 2022

Keramik

ceramic

39 x 24 x 58 cm | 15 3/8 x 9 1/2 x 22 7/8 in

Unikat | unique

Work ID: ALa/S 6

KORNFELD

Fasanenstraße 26 | 10719 Berlin
+49 30 889225890 | galerie@galeriekornfeld.com



Agnes Lammert

Labyrinth, 2022

Keramik

ceramic

30 x 45 x 40 cm | 11 3/4 x 17 3/4 x 15 3/4 in

Unikat | unique

Work ID: ALa/S 7



DAVID MESKHI

David Meskhi's backgrounds and the figures depicted in the works become abstractions focusing on colors and the human figure converted almost into landscape like shapes. He captured mostly athletes during their training, creating aesthetic compositions of men seemingly floating in air in a moment of weightlessness.

His imagery is poetic, raises connotations of sexuality, belief and expresses a common urge of the youth to free itself from social boundaries. The desire to return to early lightheartedness, which have been deeply felt especially in youth and adolescence. The questions of masculinity and femininity in different ways of life, escapism and idealism. What is natural and mystical? What is earthly and what is possibly divine.



KORNFELD

Fasanenstraße 26 | 10719 Berlin
+49 30 889225890 | galerie@galeriekornfeld.com



David Meskhi

Guardians N2, 2018

Alterungsbeständiger Pigmentprint auf psg BYT

Archival pigment print on psg BYT

40 x 28,5 cm | 15 3/4 x 11 1/4 in

Ed.: 3/3 + 2AP

Work ID: D/F 25/3

KORNFELD

Fasanenstraße 26 | 10719 Berlin
+49 30 889225890 | galerie@galeriekornfeld.com



David Meskhi

Abstract Body 03, 2016

Pigmentprint auf Baryt Papier
pigment print on baryta paper
20 x 30 cm | 7 7/8 x 11 3/4 in
Ed.: 3 + 2 AP

Work ID: D/F 27/2



KORNFELD

Fasanenstraße 26 | 10719 Berlin
+49 30 889225890 | galerie@galeriekornfeld.com



David Meskhi

Exersice N01, 2019

Alterungsbeständiger Pigmentprint auf Hahnemühle Barytpapier

Archival pigment print on Hahnemühle Baryt paper

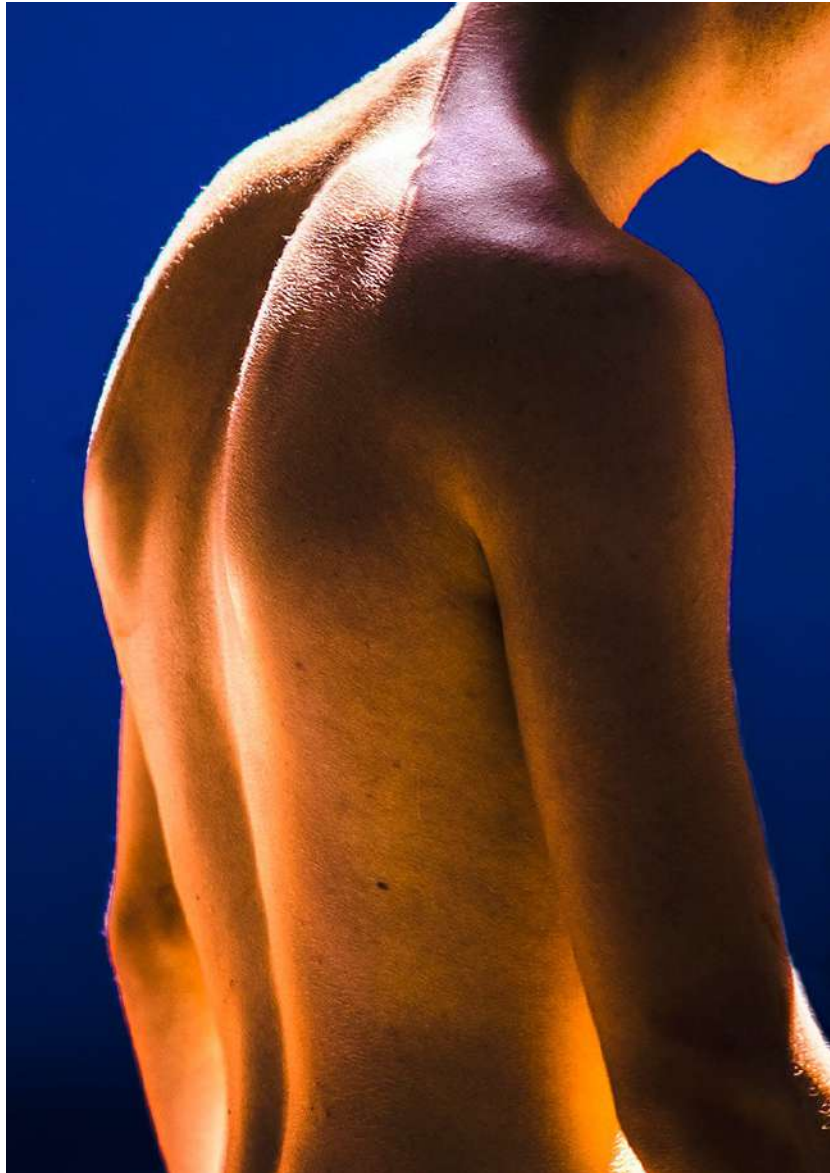
43 x 60 cm | 16 7/8 x 23 5/8 in

Ed.: 2/3 + 2AP

Work ID: D/F 47/2

KORNFELD

Fasanenstraße 26 | 10719 Berlin
+49 30 889225890 | galerie@galeriekornfeld.com



David Meskhi

Gold of light 2, 2019

Alterungsbeständiger Pigmentprint auf Hahnemühle Barytpapier

Archival pigment print on Hahnemühle Baryt paper

60 x 43 cm | 23 5/8 x 16 7/8 in

Ed.: 1/3 + 2AP

Work ID: D/F 48/1

KORNFELD

Fasanenstraße 26 | 10719 Berlin
+49 30 889225890 | galerie@galeriekornfeld.com



David Meskhi

Miss Me At The Party, 2022

Archival Pigment Print auf Hahnemühle Barytpapier

Archival Pigment Print on Hahnemühle Baryt paper

59 x 42 cm | 23 1/4 x 16 1/2 in

Ed.: 3 + 2AP

Work ID: D/F 121



KORNFELD

Fasanenstraße 26 | 10719 Berlin
+49 30 889225890 | galerie@galeriekornfeld.com



David Meskhi

Starshaped, 2021

Archival Pigment Print auf Hahnemühle Barytpapier

Archival Pigment Print on Hahnemühle Baryt paper

40 x 28,5 cm | 15 3/4 x 11 1/4 in

Ed.: 3 + 2 AP

Work ID: D/F 128

KORNFELD

Fasanenstraße 26 | 10719 Berlin
+49 30 889225890 | galerie@galeriekornfeld.com



David Meskhi

Newborn light, 2021

Archival Pigment Print auf Baryt Papier

Archival Pigment Print on baryta paper

40 x 28,5 cm | 15 3/4 x 11 1/4 in

Ed.: 3 + 2 AP

Work ID: D/F 136

KORNFELD

Fasanenstraße 26 | 10719 Berlin
+49 30 889225890 | galerie@galeriekornfeld.com



David Meskhi

Avant-garde 01, 2021

Artist Proof auf Baryt Papier

artist proof on baryta paper

60 x 42,8 cm | 23 5/8 x 16 7/8 in

Ed.: 3 + 2 AP

Work ID: D/F 138



KORNFELD

Fasanenstraße 26 | 10719 Berlin
+49 30 889225890 | galerie@galeriekornfeld.com



David Meskhi

Icon, 2022

Archival Pigment Print auf Baryt Papier

Archival Pigment Print on baryta paper

80 x 57 cm | 31 1/2 x 22 1/2 in

Ed.: 3 + 2 AP

Work ID: D/F 142

KORNFELD

Fasanenstraße 26 | 10719 Berlin
+49 30 889225890 | galerie@galeriekornfeld.com



David Meskhi

Selfi, 2022

Archival Pigment Print auf Baryt Papier

Archival Pigment Print on baryta paper

60 x 42,8 cm | 23 5/8 x 16 7/8 in

Ed.: 3 + 2 AP

Work ID: D/F 143



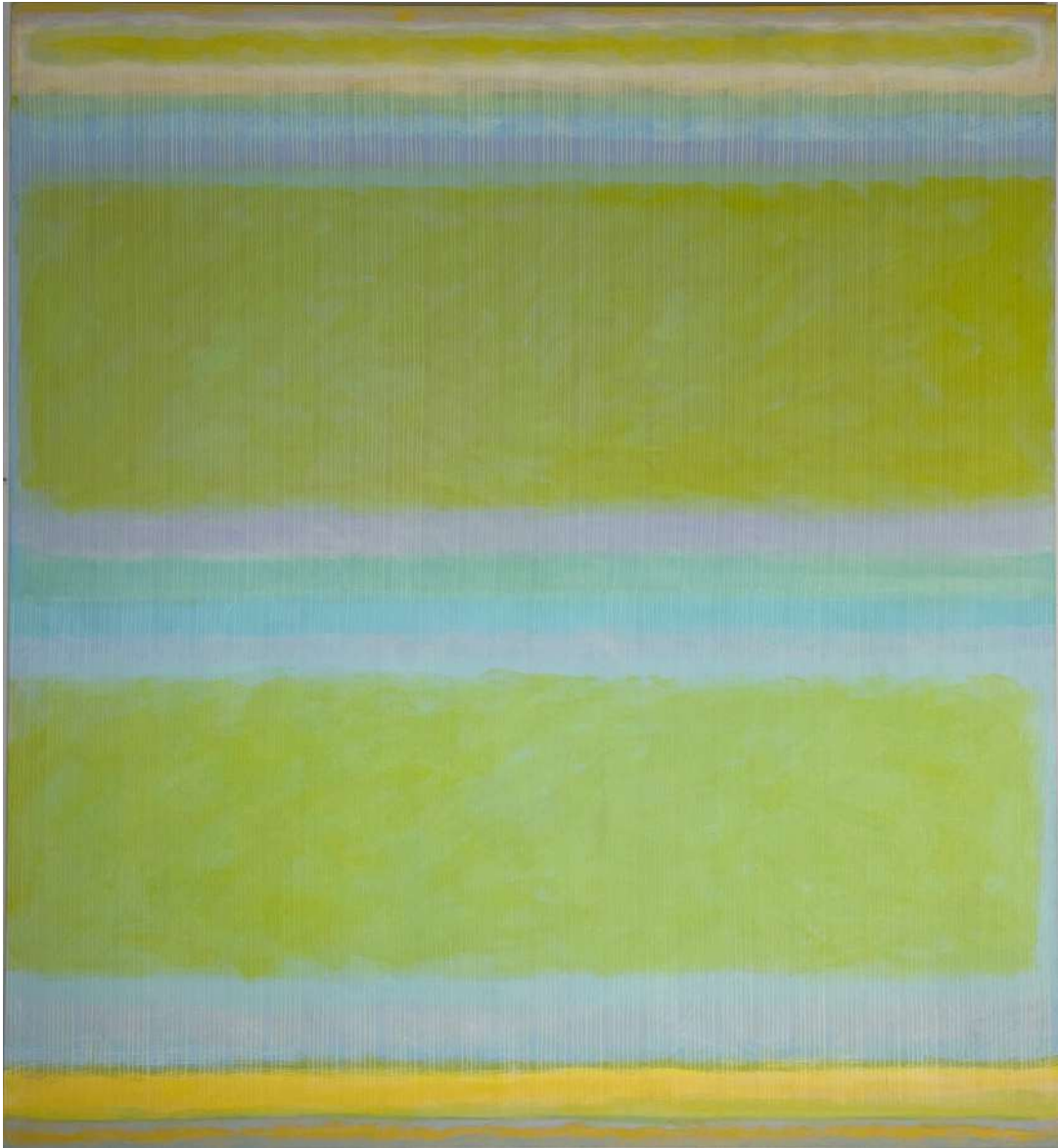
DIETER JUNG

Dieter Jung orchestrates a ballet of luminosity, where colors pirouette with emotions and space harmonizes with movement. Since the mid-1960s, Jung has embarked on an alchemical exploration, deciphering the enigma of color and light, and the interplay of surface and space, each stroke illuminating an intricate thread in the tapestry of his creation.

His works encapsulate radiant hues that weave narratives, and the world of holography transcends its visual boundaries, inviting us to traverse the thresholds of light and experience existence's harmonious composition. It is an immersive experience, encouraging us to discover bigger complex possibilities of being in the beauty of light and eventually connecting it to the beauty of life. In the realm of art, Dieter Jung emerges as a conductor of illumination, guiding us to perceive the universe's waltz with fresh eyes.

KORNFELD

Fasanenstraße 26 | 10719 Berlin
+49 30 889225890 | galerie@galeriekornfeld.com



Dieter Jung

Solar Wind, 1985

Acryl auf Leinwand

Acrylic on canvas

184 x 167 cm | 72 1/2 x 65 3/4 in

Work ID: DJ/M 14

KORNFELD

Fasanenstraße 26 | 10719 Berlin
+49 30 889225890 | galerie@galeriekornfeld.com



Dieter Jung

Solar Wind, 1985

Acryl auf Leinwand

Acrylic on canvas

184 x 167 cm | 72 1/2 x 65 3/4 in

Work ID: DJ/M 15

KORNFELD

Fasanenstraße 26 | 10719 Berlin
+49 30 889225890 | galerie@galeriekornfeld.com



Dieter Jung

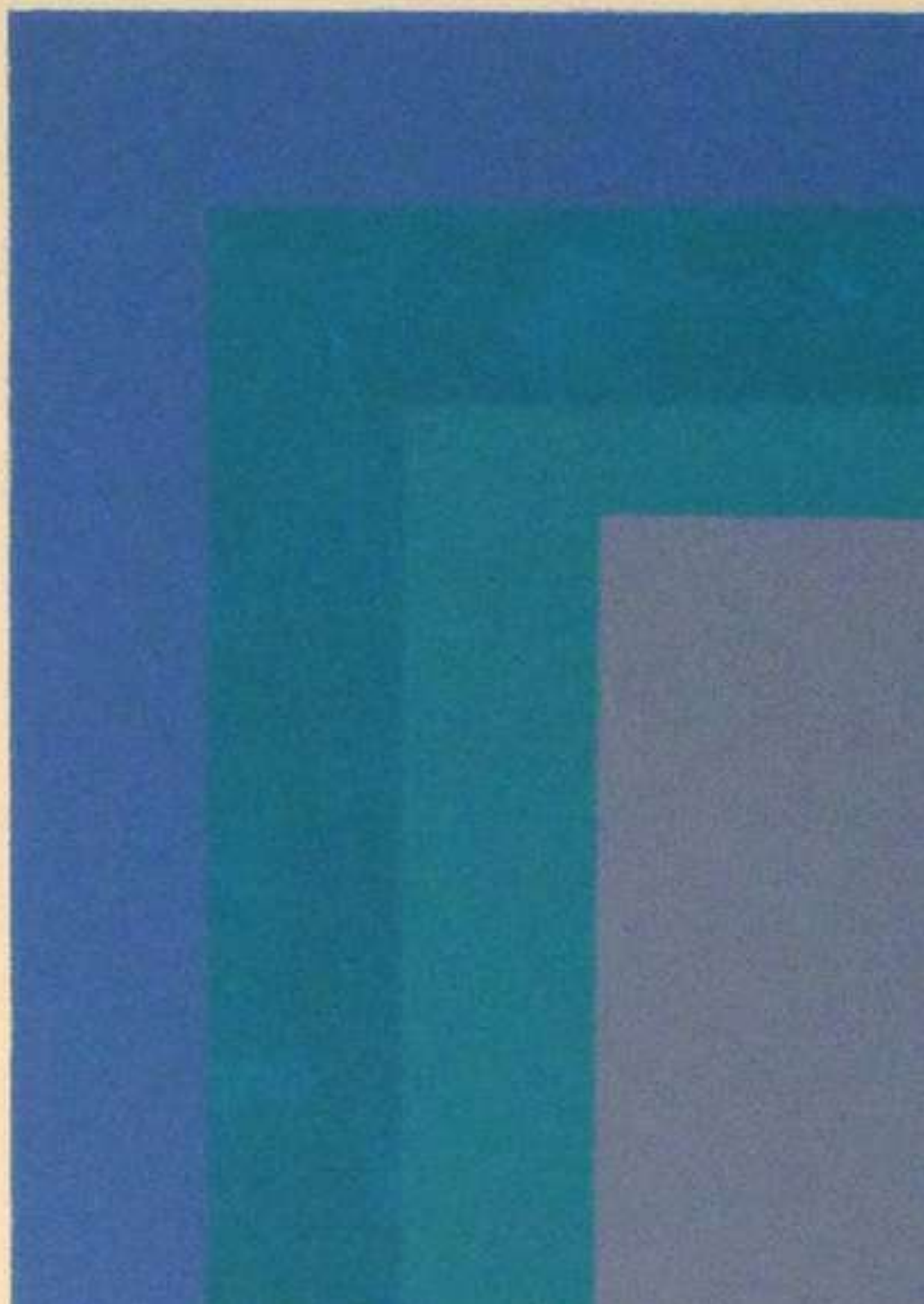
Untitled, 1998

Acryl auf Nessel

Acrylic on untreated cotton

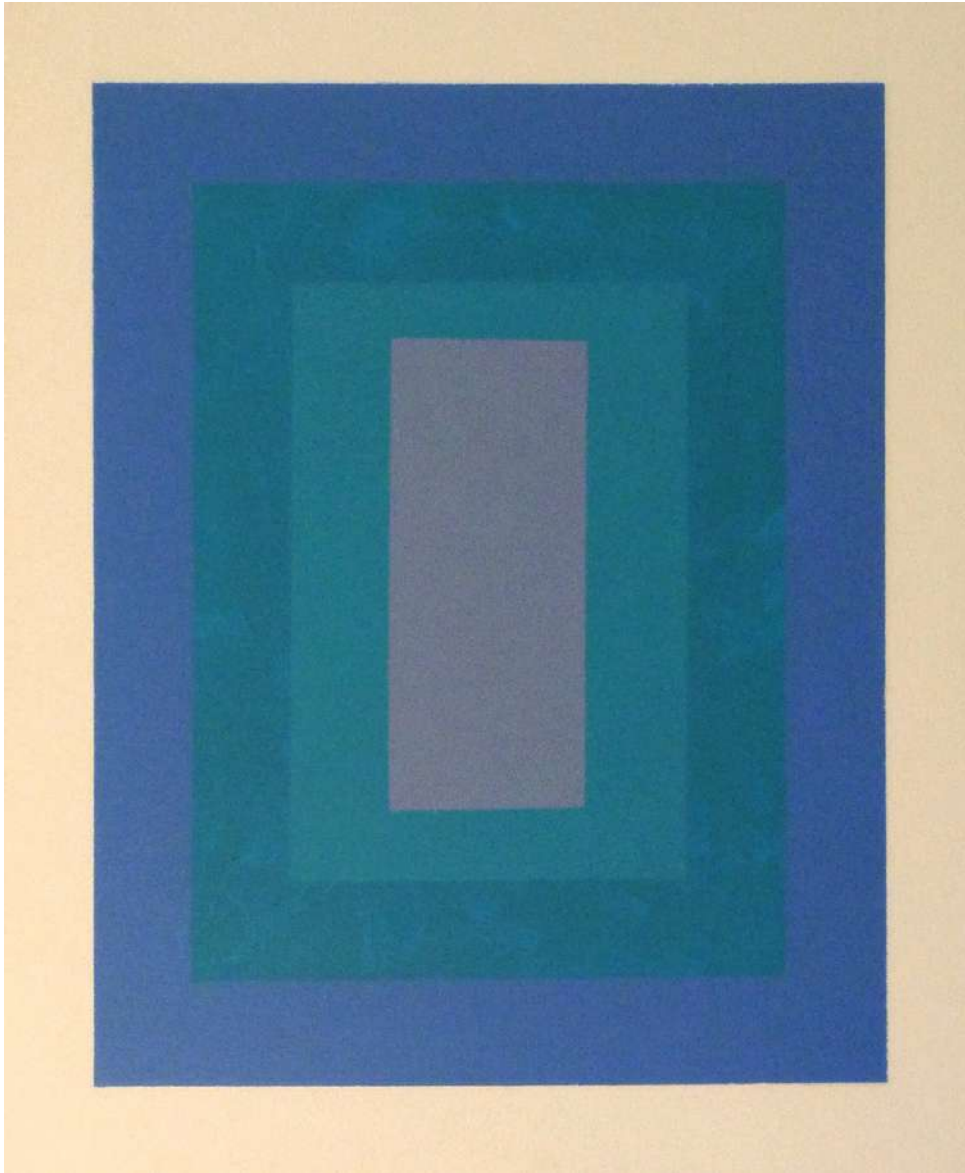
100 x 70 cm | 39 3/8 x 27 1/2 in

Work ID: DJ/M 16



KORNFELD

Fasanenstraße 26 | 10719 Berlin
+49 30 889225890 | galerie@galeriekornfeld.com



Dieter Jung

Untitled, 1998

Acryl auf Leinwand

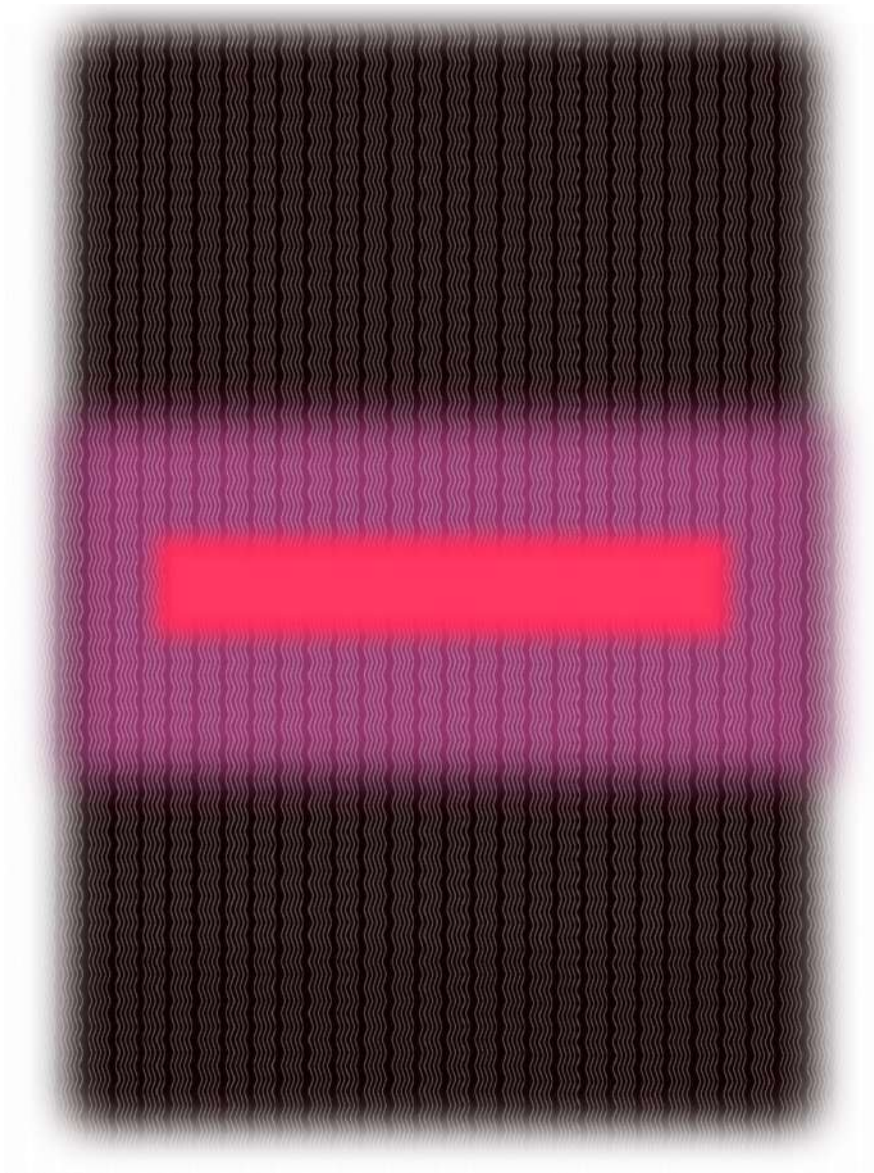
Acrylic on canvas

60 x 50 cm | 23 5/8 x 19 5/8 in

Work ID: DJ/M 17

KORNFELD

Fasanenstraße 26 | 10719 Berlin
+49 30 889225890 | galerie@galeriekornfeld.com



Dieter Jung

Untitled, 2012

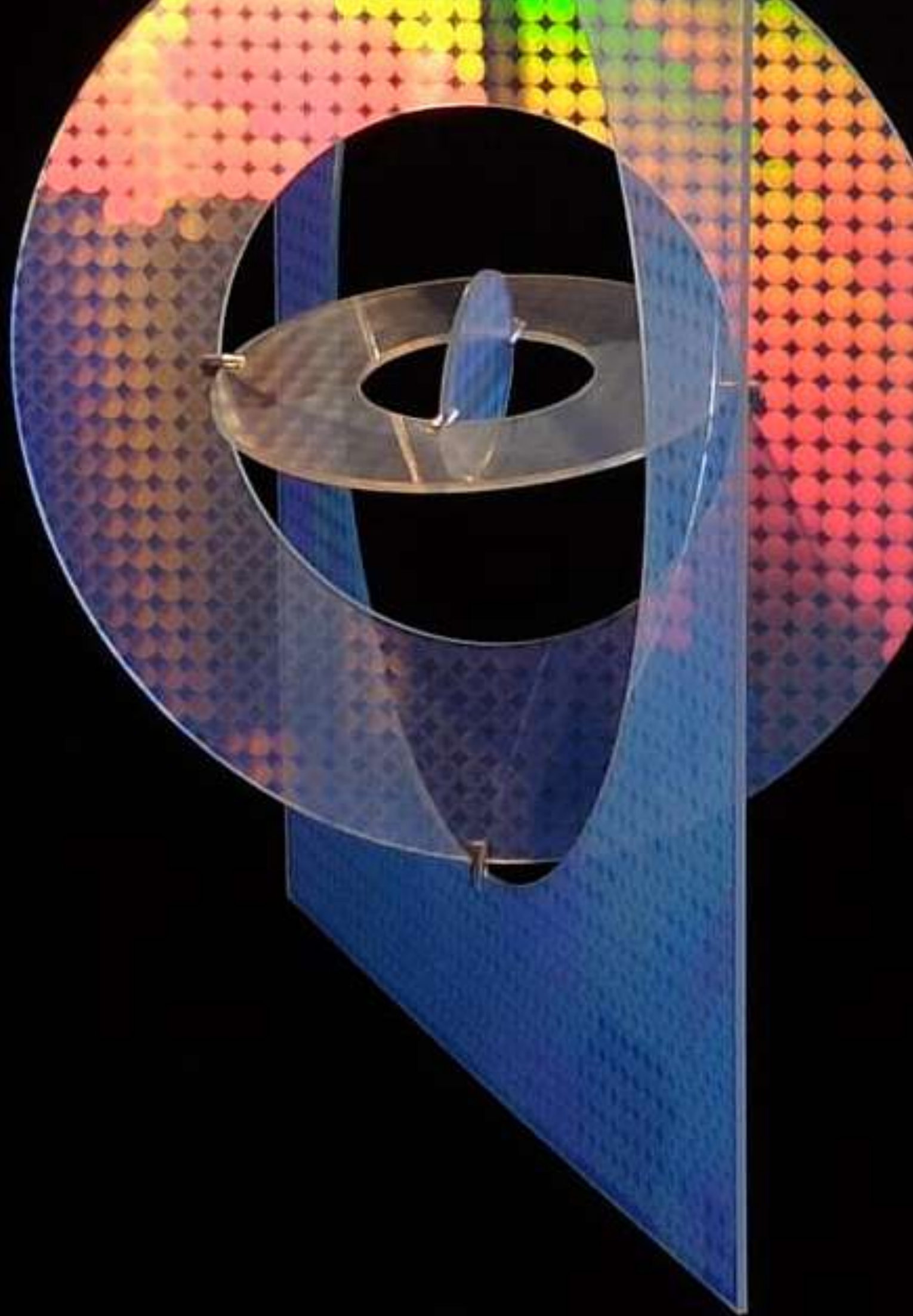
InkJet Print

inkjet print

53 x 42,5 cm | 20 7/8 x 16 3/4 in

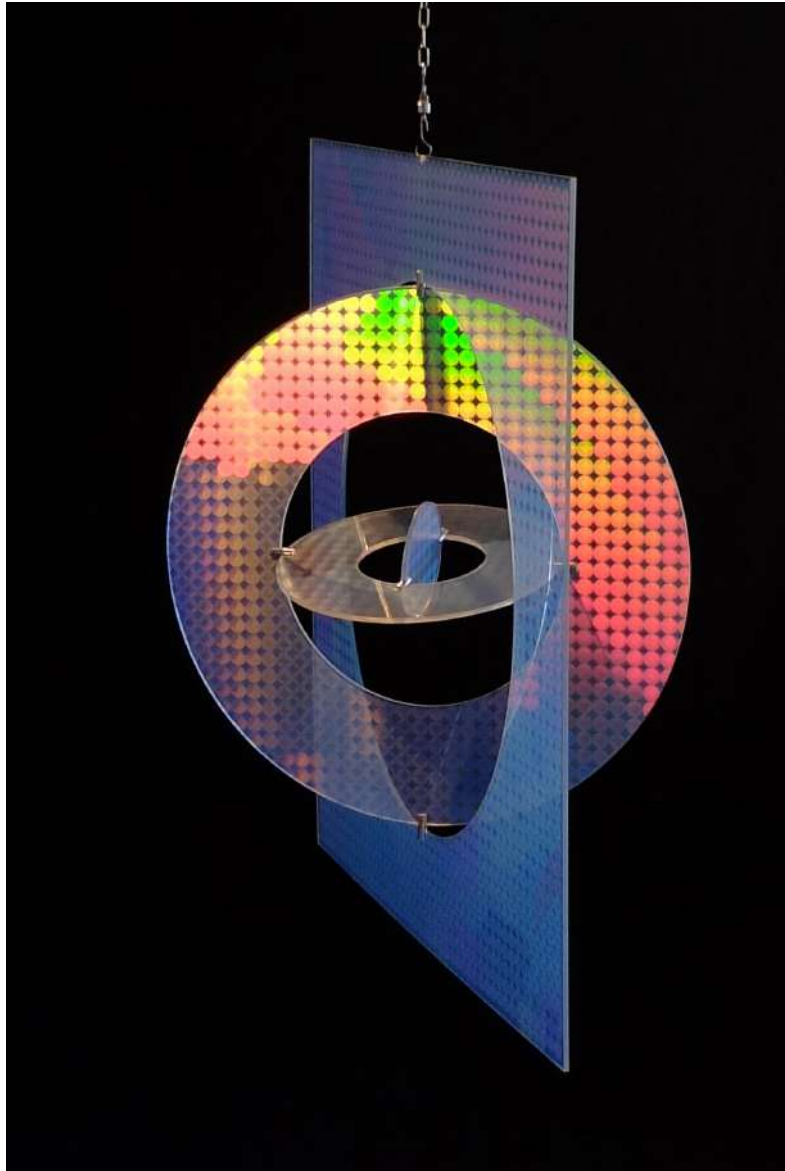
Edition 1/12

Work ID: DJ/P 1



KORNFELD

Fasanenstraße 26 | 10719 Berlin
+49 30 889225890 | galerie@galeriekornfeld.com



Dieter Jung

Sternenscheibe, 2002

Plexiglas, Stahl, Metallkette

perspex, Steel, metall chain

94 x 94 x 60 cm | 37 x 37 x 23 5/8 in

Work ID: DJ/S 1

JOHANNA REICH

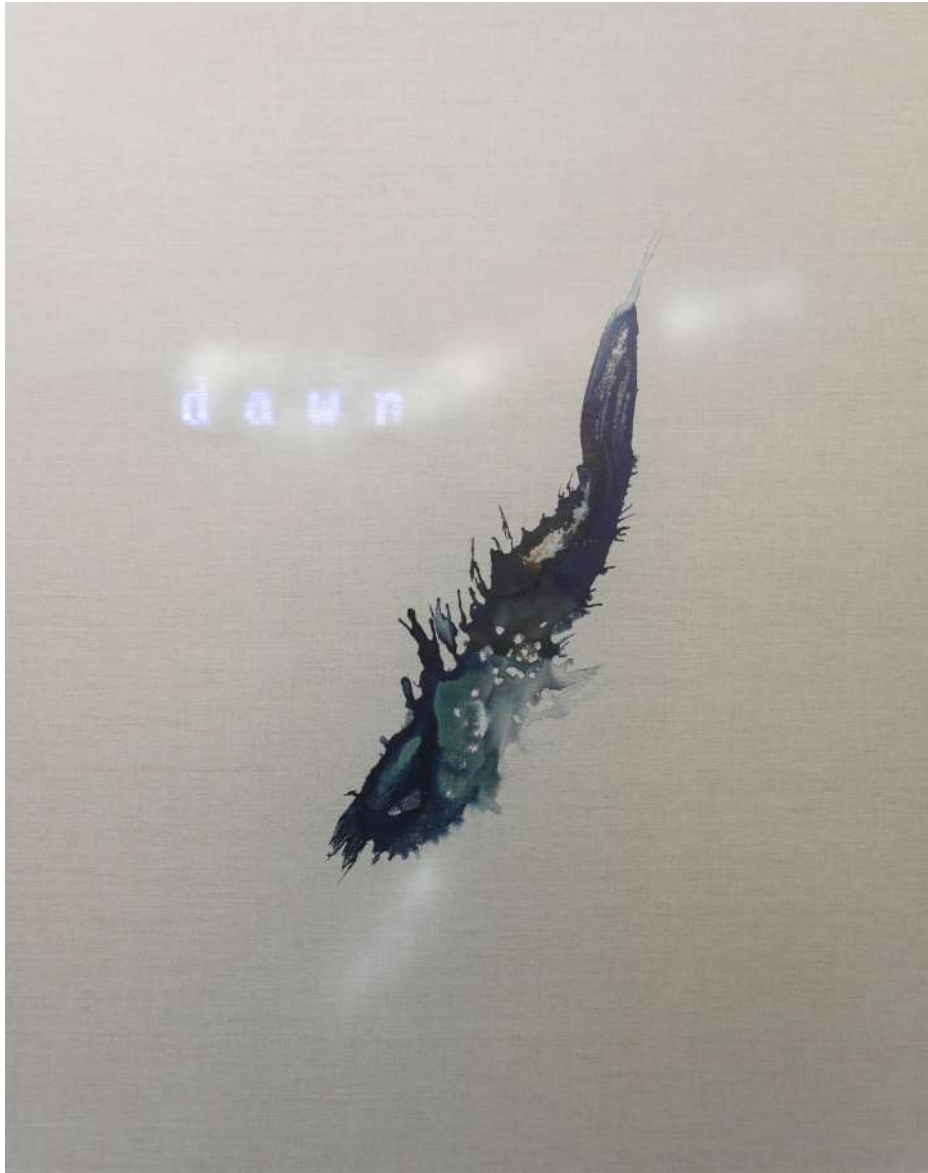
Johanna Reich works at the interface between digital and analog visual worlds. Many of her works are created on the basis of several years of research, in which the artist investigates and changes gaps in history, complex backgrounds of coding such as the opaque influence of databases on the development of algorithms and the resulting image production.

The HYBRIDS work cycle shows canvases made of natural linen covered with a few traces of paint; behind the traces, words made of light appear in a pulsating rhythm. The human and the digital are inextricably woven together in these works.



KORNFELD

Fasanenstraße 26 | 10719 Berlin
+49 30 889225890 | galerie@galeriekornfeld.com



Johanna Reich

HYBRIDS | EOS dawn, 2022
Acryl auf Leinwand, LED Licht
Acrylic on canvas, LED light
150 x 120 cm | 59 x 47 1/4 in

Work ID: JR/M 2

KORNFELD

Fasanenstraße 26 | 10719 Berlin
+49 30 889225890 | galerie@galeriekornfeld.com



Johanna Reich

HYBRIDS | Styx, 2022

Acryl auf Leinwand, LED Licht

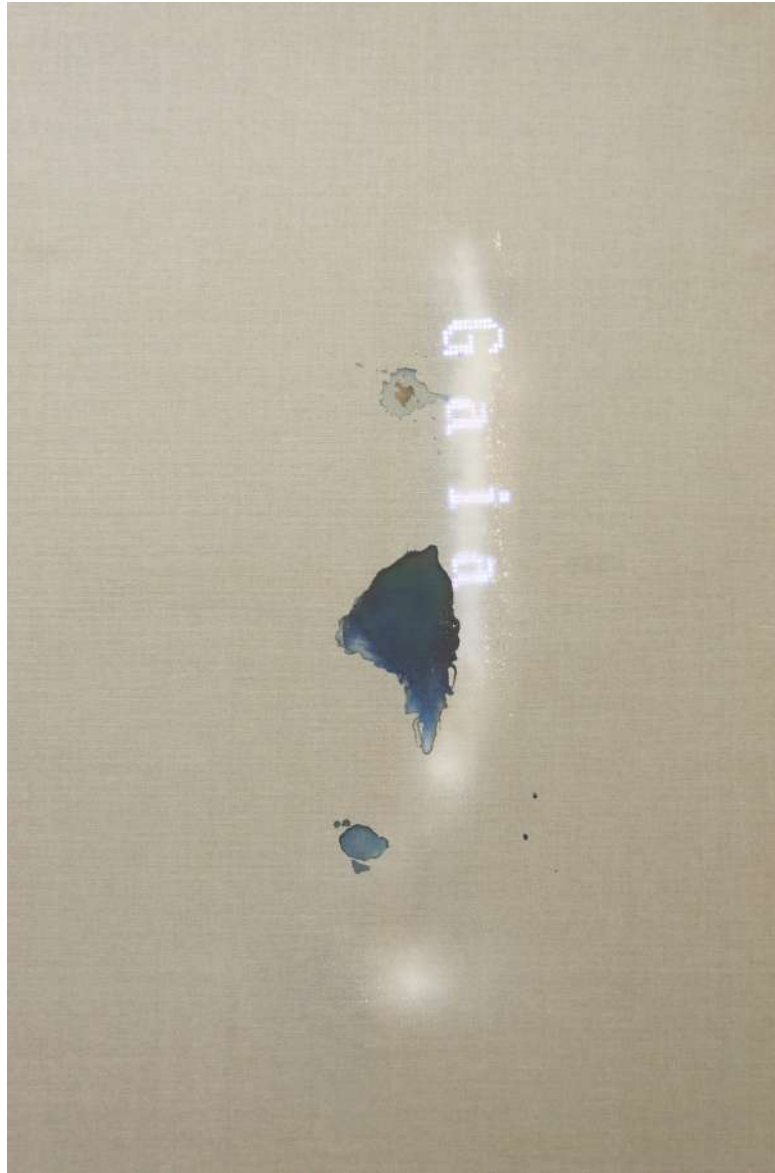
Acrylic on canvas, LED light

150 x 120 cm | 59 x 47 1/4 in

Work ID: JR/M 3

KORNFELD

Fasanenstraße 26 | 10719 Berlin
+49 30 889225890 | galerie@galeriekornfeld.com



Johanna Reich

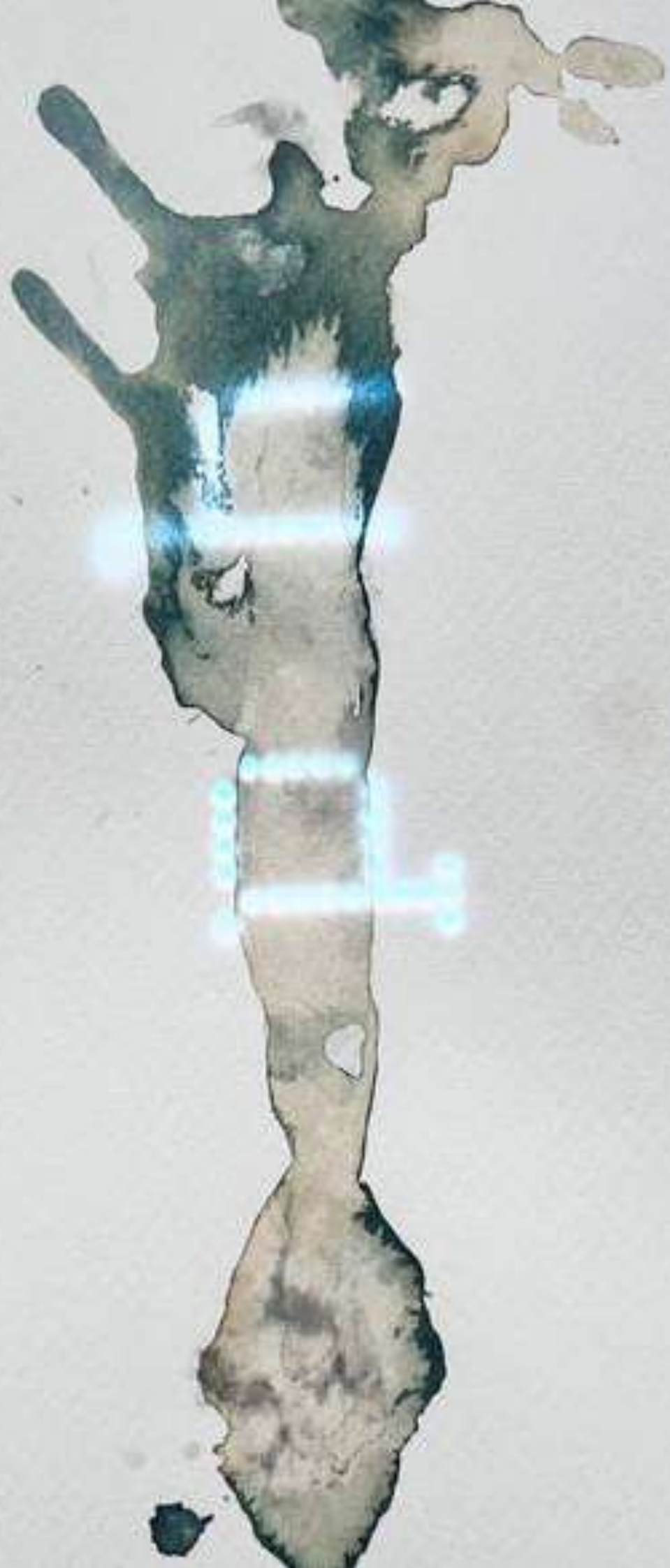
HYBRIDS | Gaia, 2022

Acryl auf Leinwand, LED Licht

Acrylic on canvas, LED light

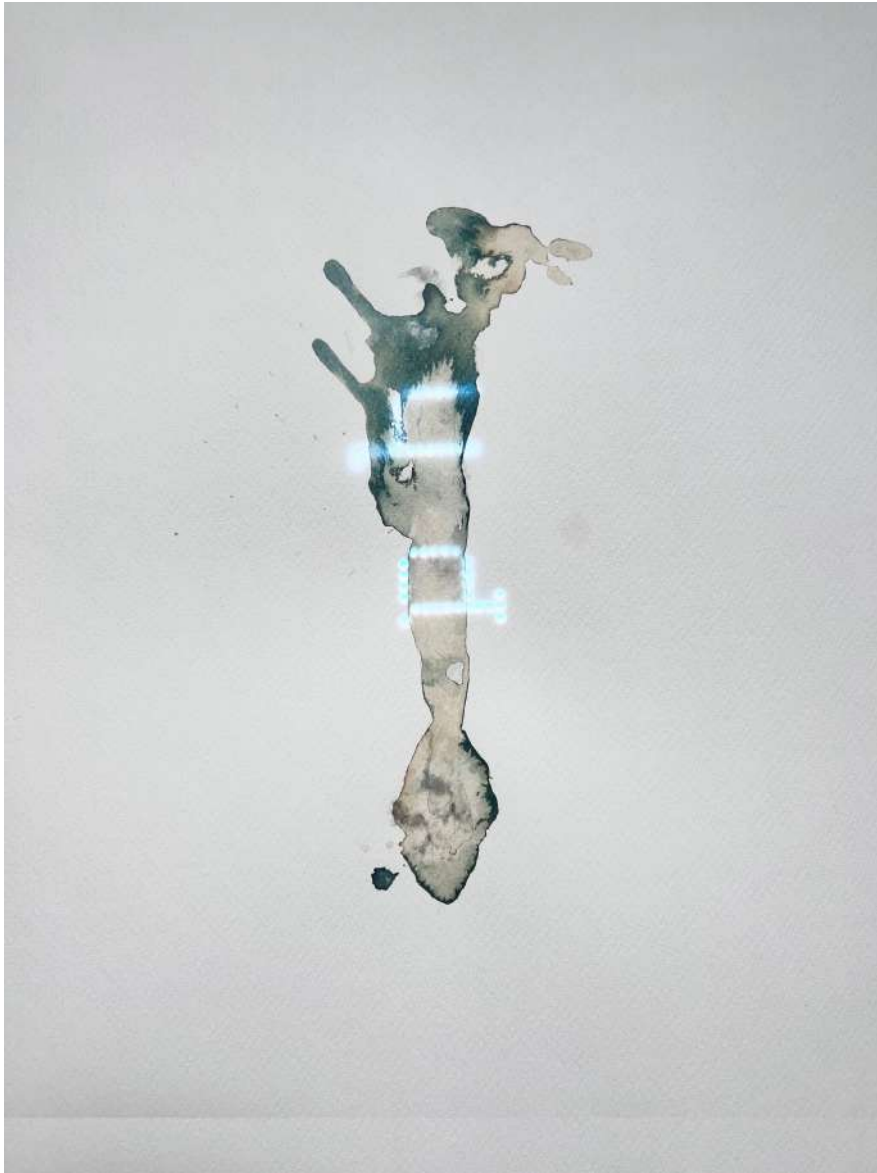
120 x 80 cm | 47 1/4 x 31 1/2 in

Work ID: JR/M 4



KORNFELD

Fasanenstraße 26 | 10719 Berlin
+49 30 889225890 | galerie@galeriekornfeld.com



Johanna Reich

PYR, Evolu'kyli, 2023

Tusche auf Aquarellpapier, LED

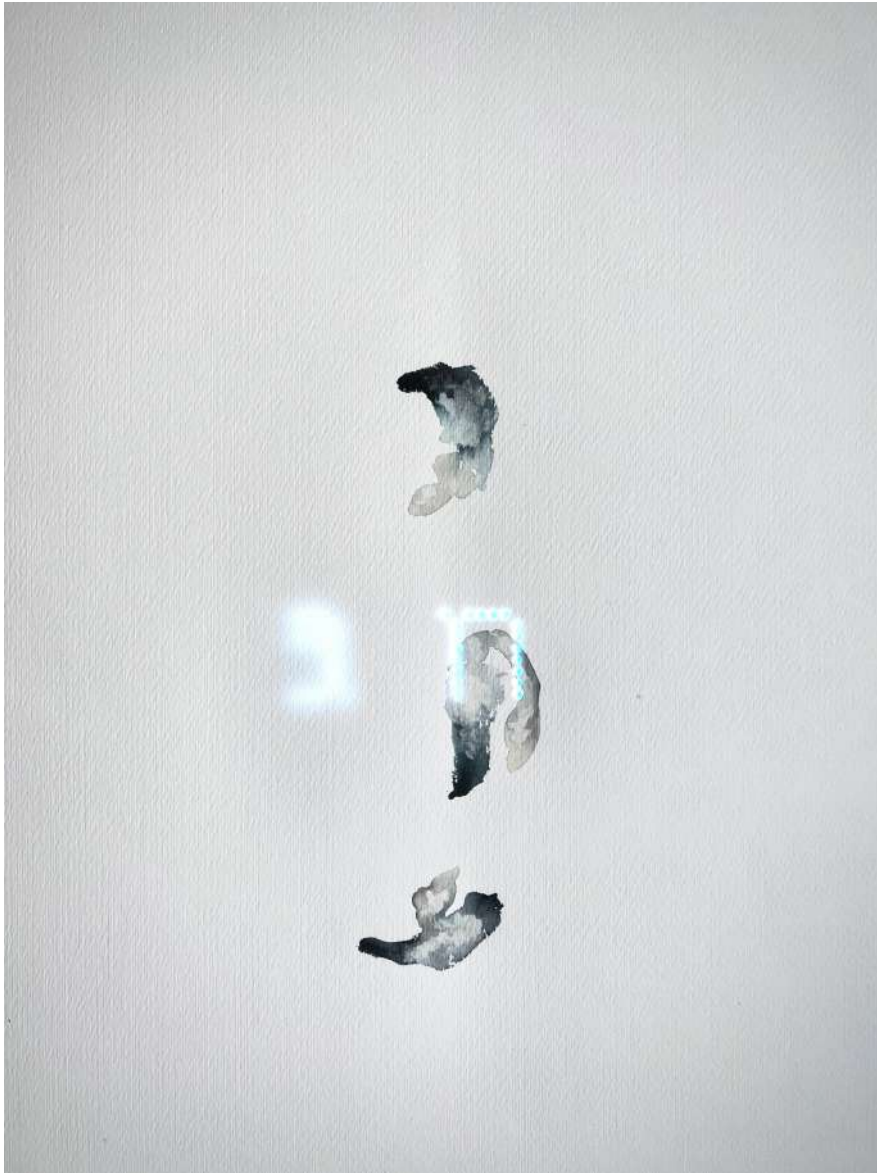
Indian ink on watercolour paper, LED

48 x 36 cm | 18 7/8 x 14 1/8 in

Work ID: JR/M 5

KORNFELD

Fasanenstraße 26 | 10719 Berlin
+49 30 889225890 | galerie@galeriekornfeld.com



Johanna Reich

PYR, Sorina'kyli, 2023

Tusche auf Aquarellpapier, LED

Indian ink on watercolour paper, LED

48 x 36 cm | 18 7/8 x 14 1/8 in

Work ID: JR/M 6



LENA KELLER

Before working on the canvas with oil paint and brush, **Lena Keller** often constructs the landscape spaces from digitally manipulated photo fragments. Representational images combine with supposedly virtual influences to create a new pictorial reality of their own.

Her view on landscape and natural spaces oscillates between longing and alienation. The desire/need for connection and preservation of the world is contrasted with the exponential technological development, through which man builds up a distance between himself and nature.

KORNFELD

Fasanenstraße 26 | 10719 Berlin
+49 30 889225890 | galerie@galeriekornfeld.com



Lena Keller

Untitled (Petal), 2022

Öl auf Leinwand

Oil on canvas

100 x 80 cm | 39 3/8 x 31 1/2 in

Work ID: LK/M 26

KORNFELD

Fasanenstraße 26 | 10719 Berlin
+49 30 889225890 | galerie@galeriekornfeld.com



Lena Keller

Glazed, 2023

Öl auf Leinwand

Oil on canvas

130 x 110 x 3,5 cm | 51 1/8 x 43 1/4 x 1 3/8 in

Work ID: LK/M 29



KORNFELD

Fasanenstraße 26 | 10719 Berlin
+49 30 889225890 | galerie@galeriekornfeld.com



Lena Keller

Laid Land, 2023

Öl auf Leinwand

Oil on canvas

130 x 110 x 3,5 cm | 51 1/8 x 43 1/4 x 1 3/8 in

Work ID: LK/M 30

NICK DAWES

Nick Dawes' ability to control complex tonal arrangements and the juxtaposition of irregular shapes give his works their unique and striking appeal. The unified flatness of his paintings also contrive to present us with various possibilities of space - of proximity and distance. Each point sends us shutting to another area of color, which in turn persuades us to examine yet a third, and so on.

Every painting Nick Dawes creates represents the time it was made in, how he felt and what his influences were in this particular moment. The impossibility of ever recreating this exact emotional state makes each work unique. With various possibilities of distance - of nearness and of farness.

The works themselves start out as small drawings and sketches based on texts appropriated from driving instruction manuals and other sign-like quotidian objects.



KORNFELD

Fasanenstraße 26 | 10719 Berlin
+49 30 889225890 | galerie@galeriekornfeld.com



Nick Dawes

Level, 2022

Öl auf Leinwand

Oil on canvas

140 x 190 cm | 55 1/8 x 74 3/4 in

Work ID: NDa68/M 68



KORNFELD

Fasanenstraße 26 | 10719 Berlin
+49 30 889225890 | galerie@galeriekornfeld.com



Nick Dawes

Bay, 2022

Öl auf Leinwand

Oil on canvas

100 x 80 cm | 39 3/8 x 31 1/2 in

Work ID: NDa68/M 69

KORNFELD

Fasanenstraße 26 | 10719 Berlin
+49 30 889225890 | galerie@galeriekornfeld.com



Nick Dawes

June, 2022

Öl auf Leinwand

Oil on canvas

40 x 50 cm | 15 3/4 x 19 5/8 in

Work ID: NDa68/M 71

KORNFELD

Fasanenstraße 26 | 10719 Berlin
+49 30 889225890 | galerie@galeriekornfeld.com



Nick Dawes

24th, 2022

Öl auf Leinwand

Oil on canvas

50 x 60 cm | 19 5/8 x 23 5/8 in

Work ID: NDa68/M 72



KORNFELD

Fasanenstraße 26 | 10719 Berlin
+49 30 889225890 | galerie@galeriekornfeld.com



Nick Dawes

File, 2022

Öl auf Leinwand

Oil on canvas

100 x 80 cm | 39 3/8 x 31 1/2 in

Work ID: NDa68/M 75

KORNFELD

Fasanenstraße 26 | 10719 Berlin
+49 30 889225890 | galerie@galeriekornfeld.com



Nick Dawes

25a, 2023

Öl auf Leinwand

Oil on canvas

140 x 190 cm | 55 1/8 x 74 3/4 in

Work ID: NDa68/M 76



KORNFELD

Fasanenstraße 26 | 10719 Berlin
+49 30 889225890 | galerie@galeriekornfeld.com



Nick Dawes

Signal, 2023

Öl auf Leinwand

Oil on canvas

150 x 200 cm | 59 x 78 3/4 in

Work ID: NDa68/M 77



YOUJIN YI

In her multifaceted artistic language, **Youjin Yi** unites objective references and abstract, painterly structures. Her works depict landscape spaces occupied by persons, animals, objects or hybrids. Seemingly dematerialized they fuse with their environment, emerge or take shape.

The motifs want to challenge, want to be deciphered and yet often remain in the realm of fantasy.

She combines lines and surfaces in the paintings; acrylic, oil, oil pastel, and graphite meet free background. Youjin Yi sometimes paints and draws directly on canvas, but much more often on paper, which she works on lying on the floor. She then glues traditional Korean paper, worked in several layers, onto wood or canvas.

KORNFELD

Fasanenstraße 26 | 10719 Berlin
+49 30 889225890 | galerie@galeriekornfeld.com



Youjin Yi

Under the stars, 2022

Acryl, Öl, Ölpastell auf koreanischem Papier montiert auf Leinwand

Acrylic, Oil, oil pastel on korean Paper mounted on canvas

40 x 60 cm | 15 3/4 x 23 5/8 in

Work ID: YYi/M 10

KORNFELD

Fasanenstraße 26 | 10719 Berlin
+49 30 889225890 | galerie@galeriekornfeld.com



Youjin Yi

Dew, 2022

Acryl, Öl, Ölpastell auf koreanischem Papier, auf Leinwand aufgezogen

Acrylic, Oil, oil pastel on korean Paper, mounted on canvas

30 x 24 cm | 11 3/4 x 9 1/2 in

Work ID: YYi/M 11



KORNFELD

Fasanenstraße 26 | 10719 Berlin
+49 30 889225890 | galerie@galeriekornfeld.com



Youjin Yi

Serpentine, 2022

Acryl, Öl, Conté auf koreanischem Papier, auf Leinwand aufgezogen

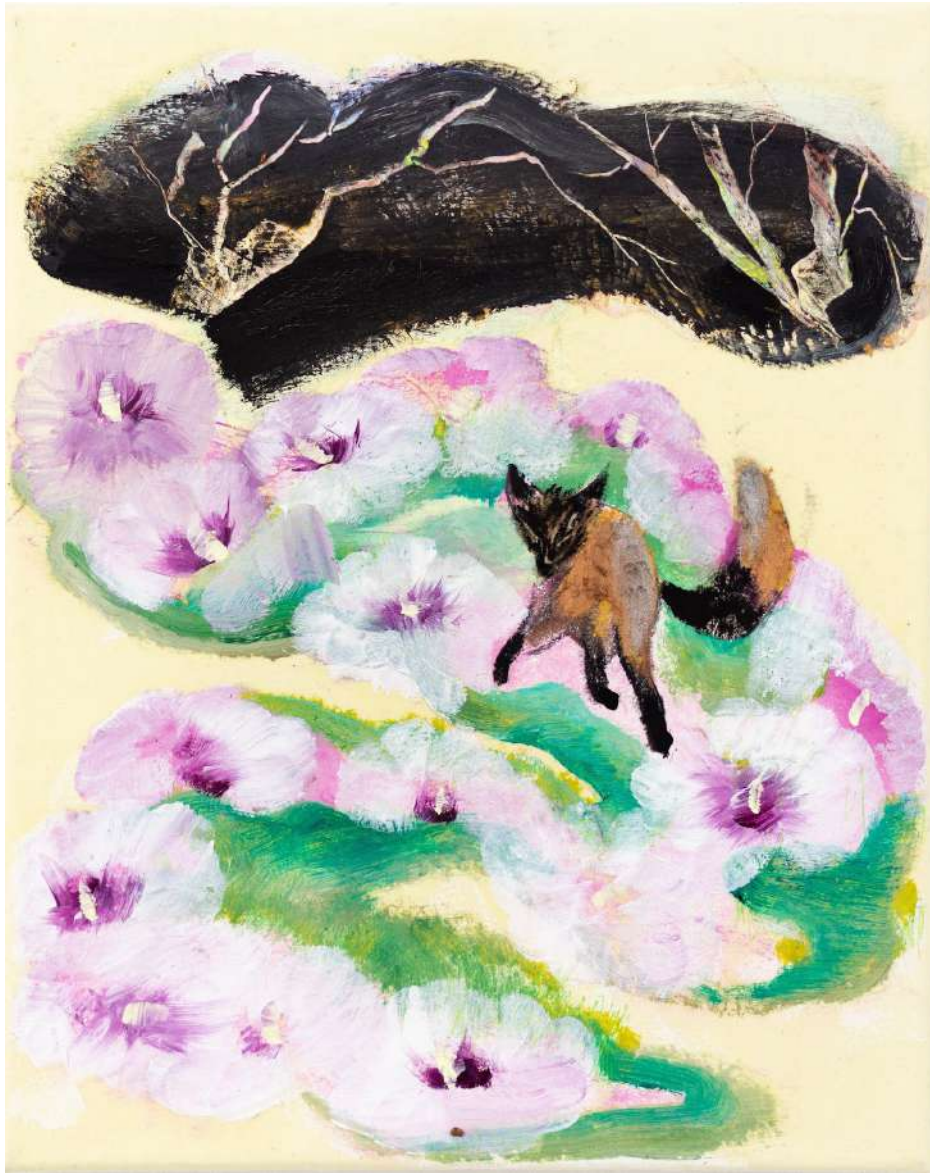
Acrylic, Oil, Conté on korean Paper, mounted on canvas

50 x 60 cm | 19 5/8 x 23 5/8 in

Work ID: YYi/M 16

KORNFELD

Fasanenstraße 26 | 10719 Berlin
+49 30 889225890 | galerie@galeriekornfeld.com



Youjin Yi

Fox in flower, 2023

Acryl, Ölpastell, Öl auf koreanischem Papier, Hanji Papier auf Leinwand aufgezogen

Acrylic, oil pastel, Oil on korean Paper, Hanji Paper mounted on canvas

30 x 24 cm | 11 3/4 x 9 1/2 in

Work ID: YYi/M 30

KORNFELD

Fasanenstraße 26 | 10719 Berlin
+49 30 889225890 | galerie@galeriekornfeld.com



Youjin Yi

Fox river, 2023

Acryl, Ölpastell, Öl auf koreanischem Papier, Hanji Papier, auf Leinwand aufgezogen

Acrylic, oil pastel, Oil on korean Paper, Hanji Paper, mounted on canvas

30 x 24 cm | 11 3/4 x 9 1/2 in

Work ID: YYi/M 31



KORNFELD

Fasanenstraße 26 | 10719 Berlin
+49 30 889225890 | galerie@galeriekornfeld.com



Youjin Yi

palm guardian, 2023

Öl, Ölpastell auf Leinwand

Oil, oil pastel on canvas

24 x 18 cm | 9 1/2 x 7 1/8 in

Work ID: YYi/M 32

KORNFELD

Fasanenstraße 26 | 10719 Berlin
+49 30 889225890 | galerie@galeriekornfeld.com



Youjin Yi

Stork step, 2023

Acryl, Conté, Ölpastell, Öl, auf koreanischem Papier, Hanji Papier, auf Leinwand aufgezogen

Acrylic, Conté, oil pastel, Oil, on korean Paper, Hanji Paper, mounted on canvas

24 x 30 cm | 9 1/2 x 11 3/4 in

Work ID: YYi/M 35

KORNFELD

Fasanenstraße 26 | 10719 Berlin
+49 30 889225890 | galerie@galeriekornfeld.com



Youjin Yi

Under the leaf, 2023

Kohle, Ölpastell, Öl, auf koreanischem Papier, Hanji Papier auf Leinwand aufgezogen
charcoal, oil pastel, Oil, on korean Paper, Hanji Paper mounted on canvas

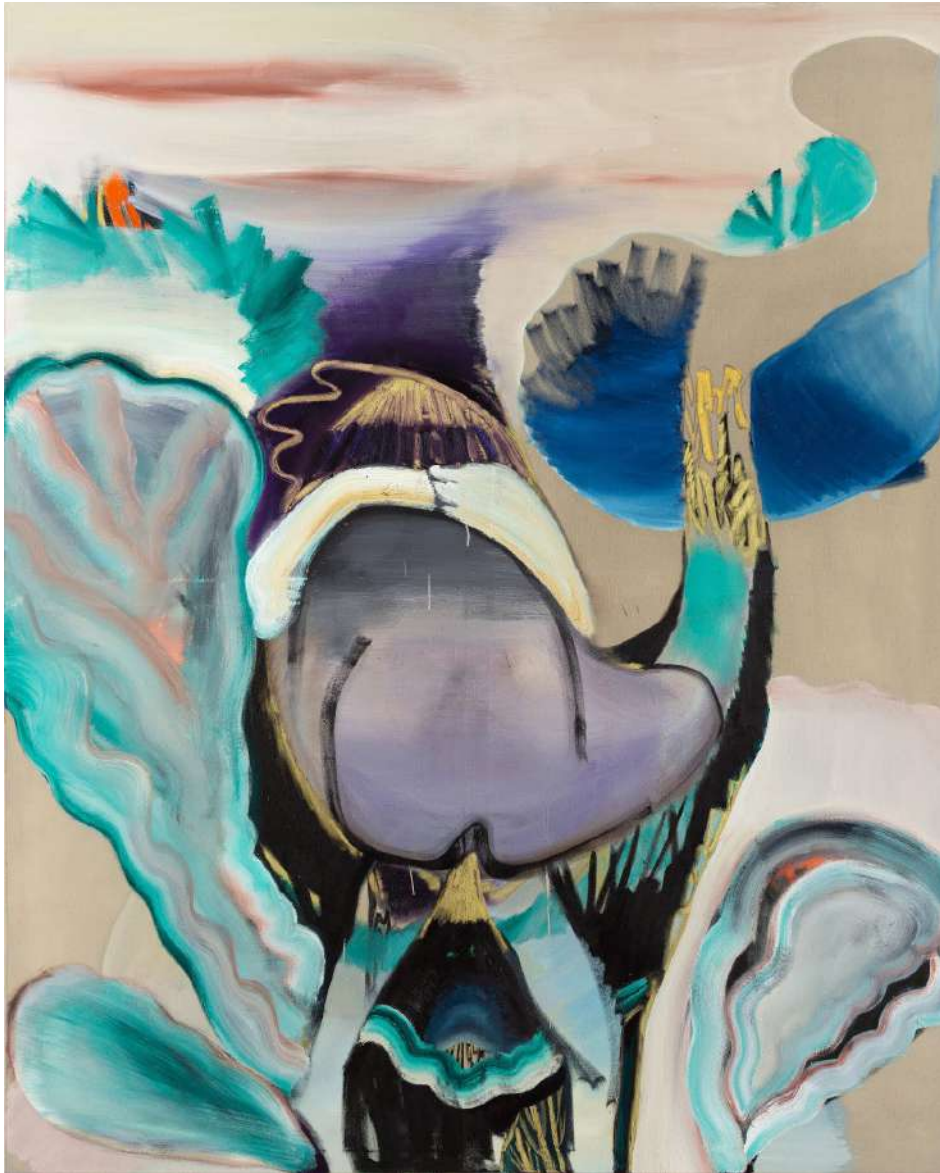
30 x 24 cm | 11 3/4 x 9 1/2 in

Work ID: YYi/M 36



KORNFELD

Fasanenstraße 26 | 10719 Berlin
+49 30 889225890 | galerie@galeriekornfeld.com



Youjin Yi

Untitled, 2021

Öl, Ölpastell auf Leinwand

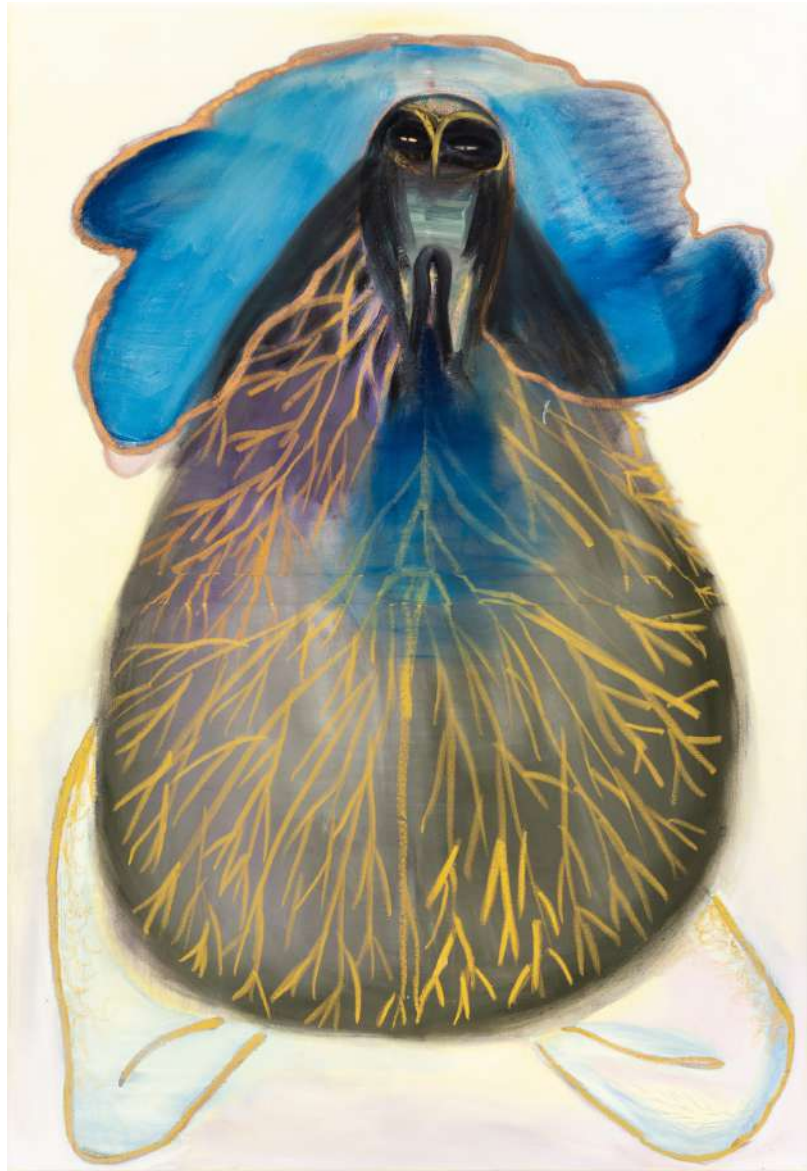
Oil, oil pastel on canvas

200 x 160 cm | 78 3/4 x 63 in

Work ID: YYi/M 37

KORNFELD

Fasanenstraße 26 | 10719 Berlin
+49 30 889225890 | galerie@galeriekornfeld.com



Youjin Yi

Blaue Flügel, 2022

Acryl, Öl und Ölpastell auf Leinwand

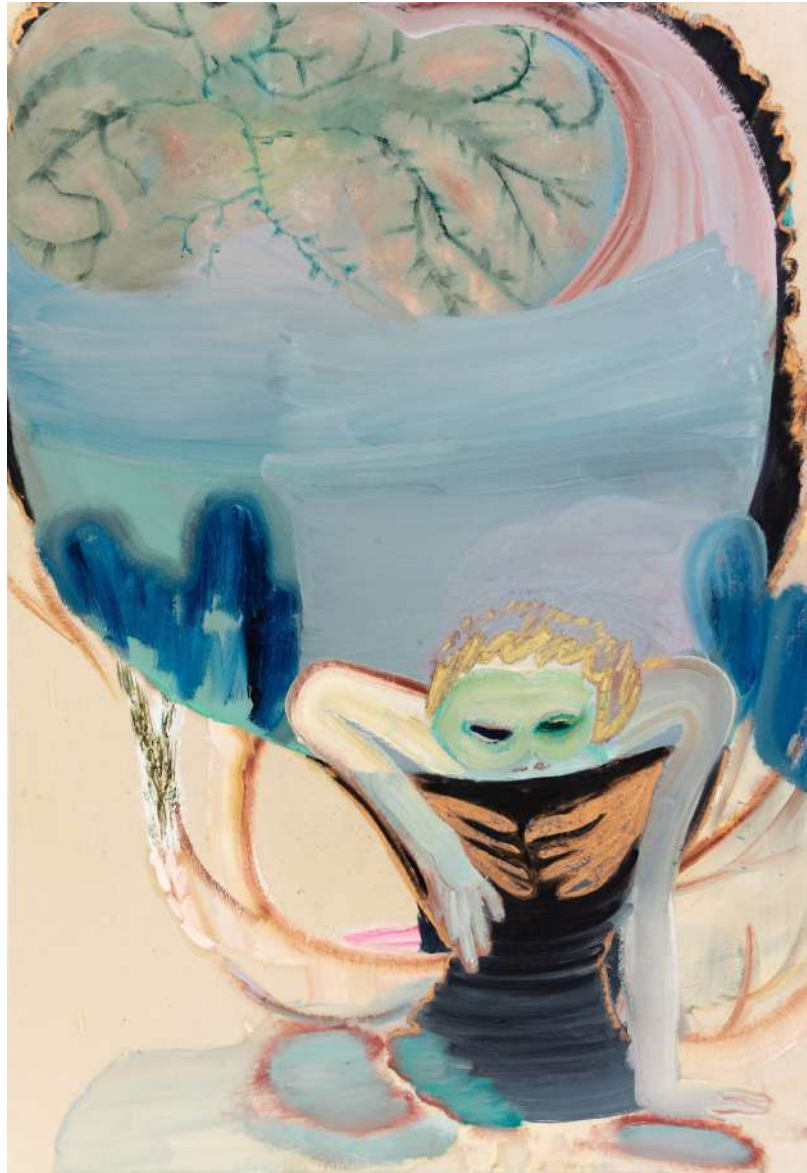
Acrylic, Oil and oil pastel on canvas

160 x 110 cm | 63 x 43 1/4 in

Work ID: YYi/M 38

KORNFELD

Fasanenstraße 26 | 10719 Berlin
+49 30 889225890 | galerie@galeriekornfeld.com



Youjin Yi

Guardian of Sleep, 2022

Öl und Ölpastell auf koreanischem Papier auf Leinwand

Oil and oil pastel on korean Paper on canvas

145 x 100 cm | 57 1/8 x 39 3/8 in

Work ID: YYi/M 39



KORNFELD

Fasanenstraße 26 | 10719 Berlin
+49 30 889225890 | galerie@galeriekornfeld.com



Youjin Yi

Koi und Teich, 2018

Öl und Ölpastell und Graphit auf koreanischem Papier auf Leinwand

Oil and oil pastel and Graphite on korean Paper on canvas

135 x 200 cm | 53 1/8 x 78 3/4 in

Work ID: YYi/M 40



KORNFELD

Fasanenstraße 26 | 10719 Berlin
+49 30 889225890 | galerie@galeriekornfeld.com



Youjin Yi

Untitled, 2022

Acryl und Öl und Ölpastell auf koreanischem Papier auf Leinwand

Acrylic and Oil and oil pastel on korean Paper on canvas

145 x 100 cm | 57 1/8 x 39 3/8 in

Work ID: YYi/M 41

KORNFELD

Fasanenstraße 26 | 10719 Berlin
+49 30 889225890 | galerie@galeriekornfeld.com



Youjin Yi

Wolf Noise, 2023

Acryl und Öl und Ölpastell auf koreanischem Papier auf Leinwand

Acrylic and Oil and oil pastel on korean Paper on canvas

100 x 140 cm | 39 3/8 x 55 1/8 in

Work ID: YYi/M 42